

# Cessna Crusader T303

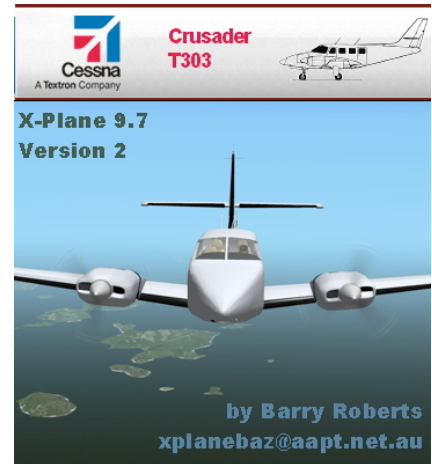
*For X-Plane 9.70*

*Author: Barry Roberts*

*Email: [xplanebaz@aapt.net.au](mailto:xplanebaz@aapt.net.au)*

*Version: 2.2*

*Date: Oct 13<sup>th</sup> 2013*



Data for this project has mostly come from TCDS A34CE.

This aircraft is a full object model created using Blender 2.65 and 2.49. <http://www.blender.org>  
Blender to X-Plane scripts are available at:

- <http://marginal.org.uk/x-planescenery/tools.html> - Blender 2.49
- <https://github.com/der-On/XPlane2Blender/wiki> - Blender 2.65

## ***Special Thanks goes to:***

Danklaue - <http://forums.x-plane.org/index.php?showuser=3424> for his awesome video tutorials: [http://wiki.x-plane.com/Plane\\_Maker\\_Video\\_Tutorials](http://wiki.x-plane.com/Plane_Maker_Video_Tutorials)

Jonathan Harris and "der-On" for their work developing the Blender export scripts.

Modifications including paint designs are welcome however a courtesy email or PM (X-Plane.org) would be welcomed with appropriate credits.

## ***Installation:***

Copy the entire aircraft folder into the aircraft folder in your X-Plane

## ***What's New?***

13/10/13 – Adjusted undercarriage height.

07/10/13 – Fixed texture/slider alignment: pilot visor, added ADF radios, fixed under carriage texture issue, fixed visor alignment

06/10/13 – Rebuild of entire project



The Panel Switches



Engine Gauges		Landing Gear		Panel Lights		Cabin Lights		R Mag Right Engine		L Mag Left Engine		Fuel Pumps		Avionics Panel	
---------------	--	--------------	--	--------------	--	--------------	--	--------------------	--	-------------------	--	------------	--	----------------	--

*Other Panels and Controls*

**Throttle Quadrant**

This is a conventional Throttle Quad.  
There is a Prop Sync switch above the throttles  
Note: It works however it does not move.



**Autopilot**

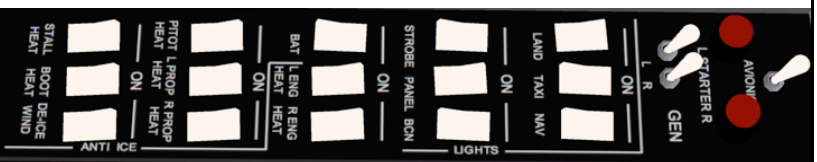
There are two AP panels. A basic panel with a Pitch and Roll override along with the Nav1/2/GPS slave switches. Toggle through to the correct switch.  
The Mode Selector is pretty straightforward.  
To fully activate the AP, select FD and AP  
To set the VS (Vertical Speed) select the desired rate of climb or descent either by hand flying or using the Pitch control and then select VS.



**Avionics Panel**

It's all pretty much as it appears.

The Panel Lights and Stall Heat switches are non functional at this time.



**Storm Window**

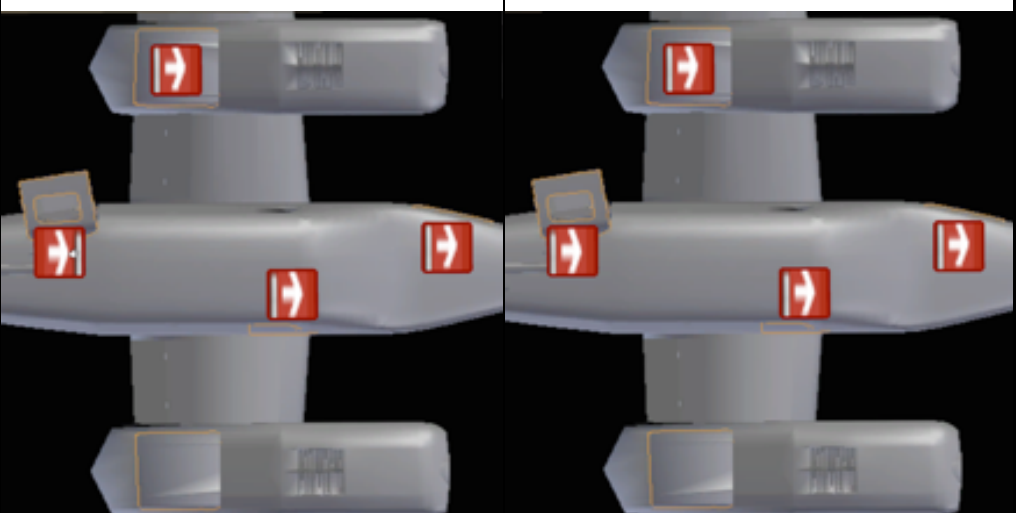
Grab the invisible slider next to the window lock and drag down to open, up from below to close.



### Door System

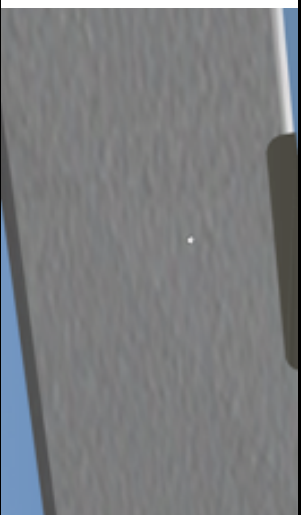
The Door System switch is on the back of the Avionics Panel. Toggle this to make this pop-up appear between the pilot and co-pilot seats.

Move the sliders forward to open and back to close the nose locker, wing lockers, rear door or co-pilot window/door. The rear door is shown here as open and an annunciator will appear on the panel.



### Pilot and Co-Pilot Visors

Grab the invisible slider and drag down to open, up from below to close.



**Important**

- The inclusion of any individual file from this archive in another archive without the prior permission of the author is prohibited.
- No charge may be made for this archive or any part of contained within the archive
- The end user takes full and total responsibility for the use of this software

Don't publish any modified or altered version without my consent.

**Copyright: 2013**